



Performance Report for: <https://amsautosdemo.com/>

Report generated: Thu, Dec 14, 2023 2:18 PM -0800
 Test Server Location: Vancouver, Canada
 Using: Chrome 117.0.0.0, Lighthouse 11.0.0

A	Performance	Structure	L. Contentful Paint	T. Blocking Time	C. Layout Shift
	98%	95%	1.1s	61ms	0.01

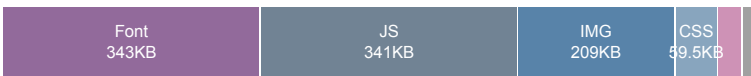
Top Issues

IMPACT	AUDIT	
Med	Use explicit width and height on image elements <small>CLS</small>	10 images found
Med	Use a Content Delivery Network (CDN)	65 resources found
Low	Avoid an excessive DOM size <small>TBT</small>	1,008 elements
Low	Avoid enormous network payloads <small>LCP</small>	Total size was 0.99MB
Low	Properly size images	Potential savings of 50.0KB

Page Details



Total Page Size - 0.98MB



Total Page Requests - 81



Legend: HTML JS CSS IMG Video Font Other

How does this affect me?

Today's web user expects a fast and seamless website experience. Delivering that fast experience can result in increased visits, conversions and overall happiness.

As if you didn't need more incentive, **Google has announced that they are using page speed in their ranking algorithm.**

About GTmetrix

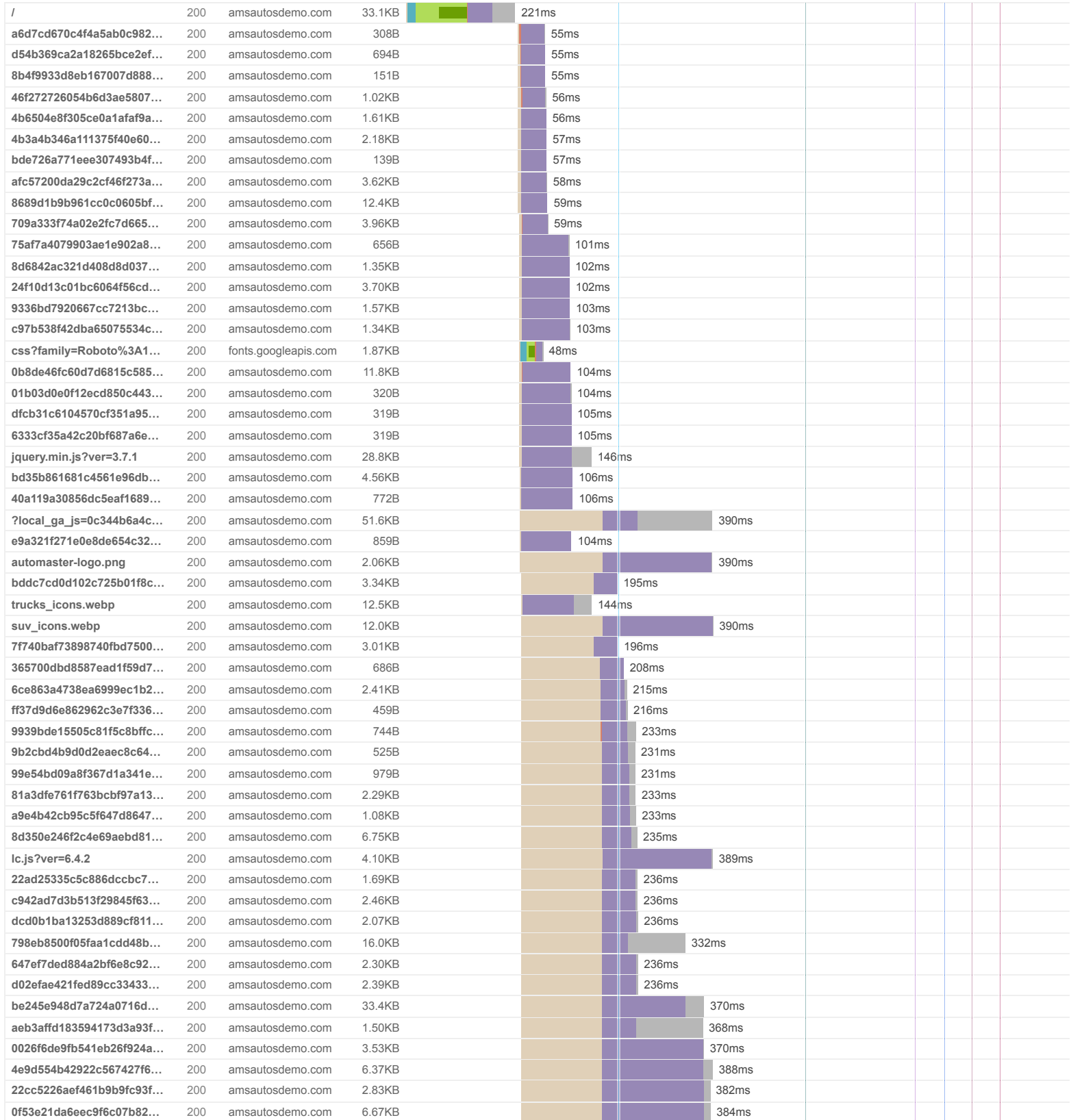
CARBON60
THE MANAGED CLOUD COMPANY

GTmetrix is developed by the good folks at Carbon60, a Canadian hosting company with over 27 years experience in web technology.

<https://carbon60.com/>

The waterfall chart displays the loading behaviour of your site in your selected browser. It can be used to discover simple issues such as 404's or more complex issues such as external resources blocking page rendering.

Auto Master Systems - Dealer Demo Website





Performance Metrics

<p>First Contentful Paint</p> <p>How quickly content like text or images are painted onto your page. A good user experience is 0.9s or less.</p>	<p>Good - Nothing to do here</p> <p>427ms</p>	<p>Time to Interactive</p> <p>How long it takes for your page to become fully interactive. A good user experience is 2.5s or less.</p>	<p>Good - Nothing to do here</p> <p>1.0s</p>
<p>Speed Index</p> <p>How quickly the contents of your page are visibly populated. A good user experience is 1.3s or less.</p>	<p>Good - Nothing to do here</p> <p>941ms</p>	<p>Total Blocking Time</p> <p>How much time is blocked by scripts during your page loading process. A good user experience is 150ms or less.</p>	<p>Good - Nothing to do here</p> <p>61ms</p>
<p>Largest Contentful Paint</p> <p>How long it takes for the largest element of content (e.g. a hero image) to be painted on your page. A good user experience is 1.2s or less.</p>	<p>Good - Nothing to do here</p> <p>1.1s</p>	<p>Cumulative Layout Shift</p> <p>How much your page's layout shifts as it loads. A good user experience is a score of 0.1 or less.</p>	<p>Good - Nothing to do here</p> <p>0.01</p>

Browser Timings

Redirect	0ms	Connect	125ms	Backend	48ms
TTFB	173ms	First Paint	428ms	DOM Int.	804ms
DOM Loaded	807ms	Onload	1.1s	Fully Loaded	1.2s

IMPACT	AUDIT	
Med	Use explicit width and height on image elements CLS	10 images found
Med	Use a Content Delivery Network (CDN)	65 resources found
Low	Avoid an excessive DOM size TBT	1,008 elements
Low	Avoid enormous network payloads LCP	Total size was 0.99MB
Low	Properly size images	Potential savings of 50.0KB
Low	Serve static assets with an efficient cache policy	Potential savings of 5.16KB
Low	Avoid long main-thread tasks TBT	3 long tasks found
Low	Reduce JavaScript execution time TBT	185ms spent executing JavaScript
Low	Reduce unused CSS FCP LCP	Potential savings of 23.0KB
Low	Avoid chaining critical requests FCP LCP	53 chains found
Low	Reduce unused JavaScript LCP	Potential savings of 93.7KB
N/A	Largest Contentful Paint element LCP	1,090 ms
N/A	Eliminate render-blocking resources FCP LCP	Potential savings of 0 ms
N/A	Reduce initial server response time FCP LCP	Root document took 48ms
N/A	Avoid serving legacy JavaScript to modern browsers TBT	Potential savings of 48B
N/A	Avoid large layout shifts CLS	5 elements found
N/A	Minimize main-thread work TBT	Main-thread busy for 828ms
N/A	Reduce the impact of third-party code TBT	Third-party code blocked the main thread for 9ms
N/A	User Timing marks and measures	